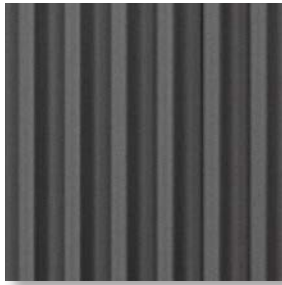


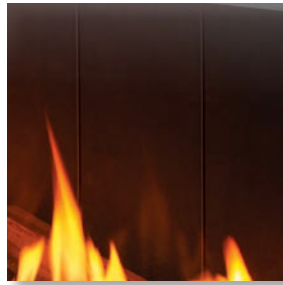
Urbana Collection Aesthetic Features

Fluted Liner



Compatible with the U30, U50, and U70

Black Steel Liner



Included with the U30, U50, and U70

Infinity Glass Liner



Compatible with the U30, U50, and U70

Shale



Compatible with the U30, U50, and U70

Traditional Log Set



Compatible with the U30, U50, and U70

Driftwood Log Set



Compatible with the U30, U50, and U70

Glass Media



Compatible with the U30, U50, and U70

River Rock Set



Compatible with the U30, U50, and U70

Adjustable Light Kit



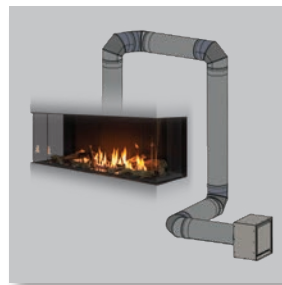
Compatible with the U30, U50, and U70

Bezels - Antique Rust or Glass



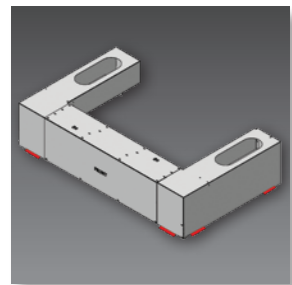
Compatible with the U30, U50, and U70

Power Vent Kit



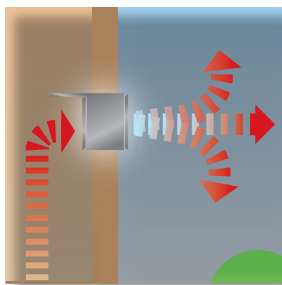
Compatible with the U30, U50, and U70

Steel-Framing Base Kit



Compatible with the U30, U50, and U70

Comfort Kit



Compatible with the U30, U50, and U70

Floating Install Kit



Compatible with the U30 Only

Venting Options



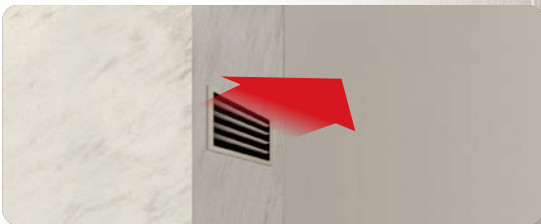
TOP SHADOW LINE

The chase is constructed leaving an open gap at the ceiling allowing rising heat to freely enter the room.



FORWARD FACING VENT

Optionally, you can channel the rising heat through a forward facing vent with a paintable bezel.



SIDE VENTS

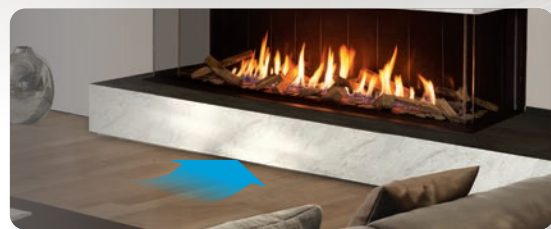
Side vents are also available and operate by exiting hot air out the left and right sides of the chase.

Floor Venting Options



FLOOR VENTS

The "plinth" or "lower construction" is finished to the floor and optional floor vents are installed on the left and right sides to allow for air intake. (Not compatible with screened bay units)



SHADOW LINE

Fans pull air into the unit through a gap beneath the fireplace's "plinth" or "lower construction". (Not compatible with screened bay units)

