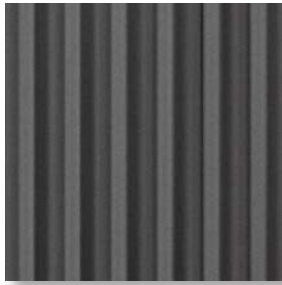


# Urbana Collection Aesthetic Features

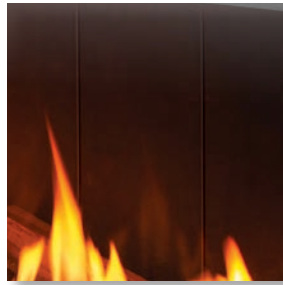
---

Fluted Liner



Compatible with the U30, U50, and U70

Black Steel Liner



Included with the U30, U50, and U70

Infinity Glass Liner



Compatible with the U30, U50, and U70

Shale



Compatible with the U30, U50, and U70

Traditional Log Set



Compatible with the U30, U50, and U70

Driftwood Log Set



Compatible with the U30, U50, and U70

Glass Media



Compatible with the U30, U50, and U70

River Rock Set



Compatible with the U30, U50, and U70

Adjustable Light Kit



Compatible with the U30, U50, and U70

Bezels - Antique Rust or Glass



Compatible with the U30, U50, and U70

Power Vent Kit



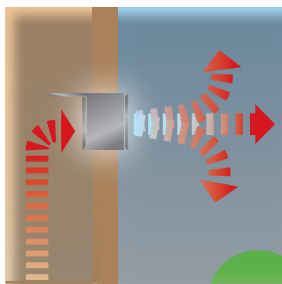
Compatible with the U30, U50, and U70

Wifi Control Kit



Compatible with the U30, U50, and U70

Comfort Kit



Compatible with the U30, U50, and U70

Floating Install Kit



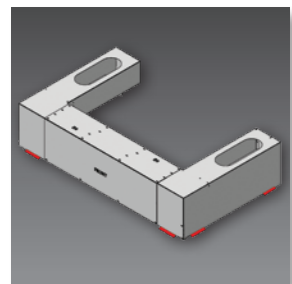
Compatible with the U30

Corner Install Kit



Compatible with the U30, U50, and U70

Steel-Framing Base Kit



Compatible with the U30, U50, and U70

# Venting Options



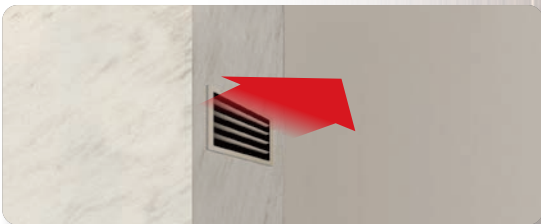
## TOP SHADOW LINE

The chase is constructed leaving an open gap at the ceiling allowing rising heat to freely enter the room.



## FORWARD FACING VENT

Optionally, you can channel the rising heat through a forward facing vent with a paintable bezel.



## SIDE VENTS

Side vents are also available and operate by exiting hot air out the left and right sides of the chase.

# Floor Venting Options



## FLOOR VENTS

The "plinth" or "lower construction" is finished to the floor and optional floor vents are installed on the left and right sides to allow for air intake.



## SHADOW LINE

Fans pull air into the unit through a gap beneath the fireplace's "plinth" or "lower construction".

